

Overview

Division of Developmental Disabilities

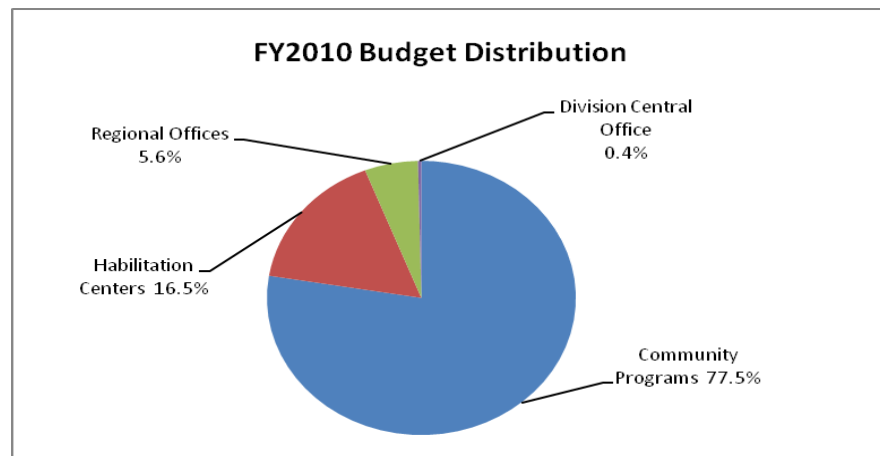
Need

There are an estimated 105,000 individuals in Missouri with developmental disabilities (based on Missouri population of 5,842,713). Approximately one to two percent of Missouri's 78,000 newborns each year will be born with some form of developmental disability.

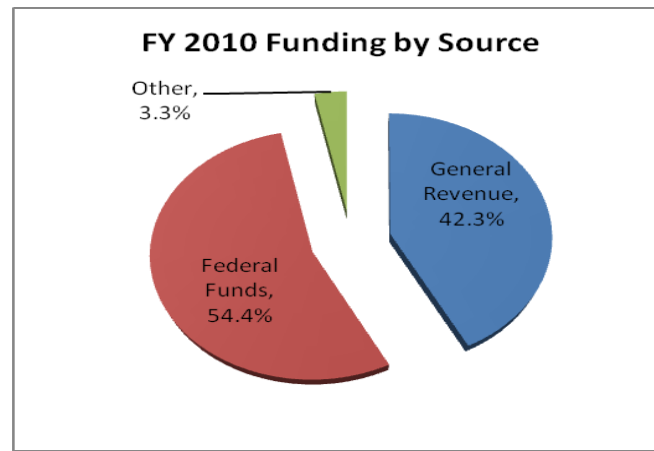
Response

The Division of Developmental Disabilities (DD) serves individuals who have been diagnosed with intellectual disabilities, cerebral palsy, epilepsy, head injury, autism, or a learning disability related to a brain dysfunction. These mental or physical impairments must be manifested before the age of twenty-two, be likely to continue indefinitely and result in substantial functional limitations. The Division's primary mission is to help improve the lives of individuals with developmental disabilities through programs and services which enable them to live independently and productively, given their individual needs and capabilities.

The Division of DD provides services to individuals with developmental disabilities through eleven regional offices and six habilitation centers. The Division employs approximately 3,800 full time equivalent employees, of which approximately 38 are considered central office employees. These central office employees oversee all statewide programs, prepare division budgets and allocate funds for facility operations. The total budget for the Division for FY2010 is \$620,900,327. (Note: This includes federal authority for Medicaid payments in the amount of \$271 million.).



About half the funding for services is provided from state general revenue. Another important source of funding comes from Medicaid payments for eligible services. These services include, but are not limited to, residential habilitation, case management and personal care.



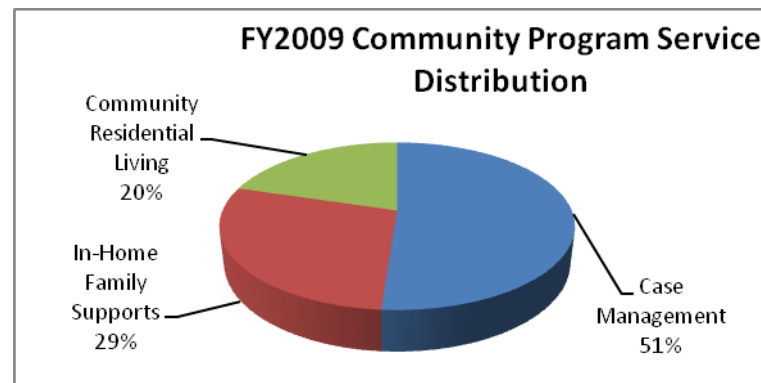
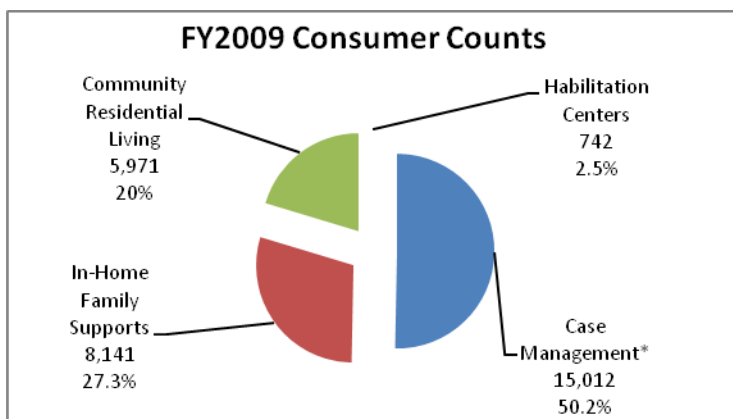
Overview

Division of Developmental Disabilities (Continued)

Where We Serve People

As of June 2009, the Division served 29,866 individuals in a variety of settings. The majority are served in their natural home and receive case management and family support services. Others live in community residential or in state habilitation centers.

The needs for individuals who live in the community are met through support services, case management, residential services (i.e. supported living or congregate living such as group homes, foster homes, residential care centers, residential care facilities, and ICF/MR community facilities), or programs such as Choices for Families (Voucher) and/or Autism Projects.



* - All consumers receive case management services.

Community-Based Services

The Division operates a community-based services system through its regional offices. As of June 2009, a total of 29,124 individuals were served through the eleven regional offices. Of these individuals, 58% or 16,985 are age 21 and older, while the remaining 12,139 are under age 21. In addition, 61% are male while 39% are female. Regarding race, 74% are comprised of whites, 18% are black or African American, and the remaining 8% are from various other ethnic groups.

State Operated Services

As a part of the services system for individuals with developmental disabilities, the Division operates six habilitation centers. These facilities provide long-term care including active treatment and habilitation in a structured residential setting. As of June 2009, 742 individuals were served through the habilitation centers.